

CO003

LIBRARY AND MUNICIPAL ARCHIVE IN LLANÇÀ

LIBRARY AND MUNICIPAL ARCHIVE IN LLANÇÀ

Open competition of ideas summoned by the Town Council of Llançà for designing a building for the new Library and Municipal Archive and the adjacent urban space. The proposal is designed from the urban scale to the constructive scale, and proposes a low and compact building that adapts itself into the ground and the morphology of the village. At the same time, it creates inner and outer public spaces protected from the "tramuntana" (north wind).

Project designed in collaboration with Jordi Queralt i Suau, architect.



1. FACTS

TYPE	SERVICES
SUBTYPE	CULTURAL
USE	PUBLIC
CLIENT	TOWN COUNCIL OF LLANÇÀ
SURFACE	1.560 m ²
LOCATION	LLANÇÀ
START	2008
COMPETION	2008

CO003
LIBRARY AND MUNICIPAL ARCHIVE IN LLANÇÀ

2. DRAWINGS



Location

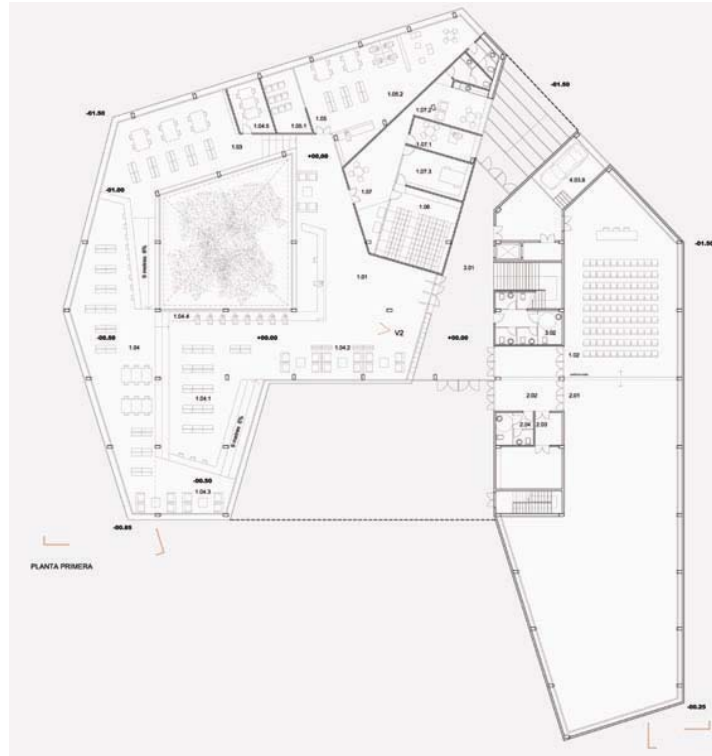


Urban plan

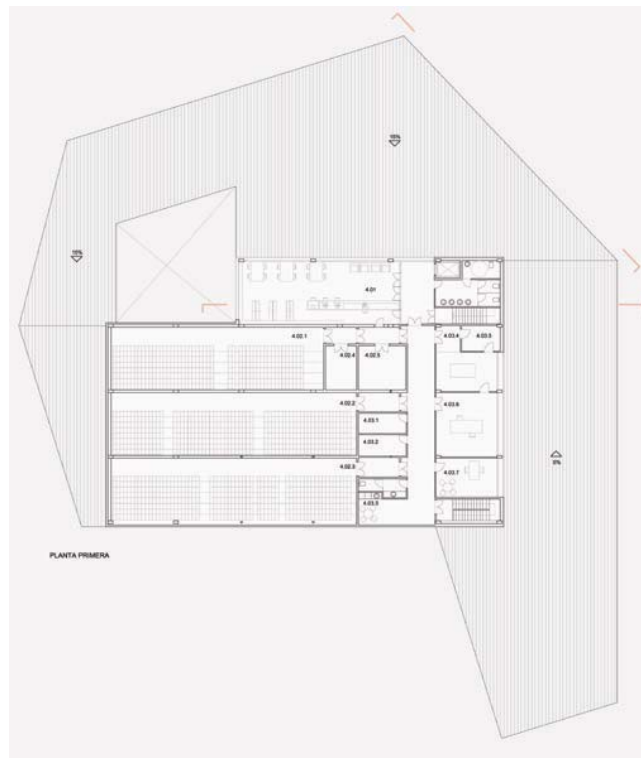


General section

CO003
LIBRARY AND MUNICIPAL ARCHIVE IN LLANÇÀ



Ground floor

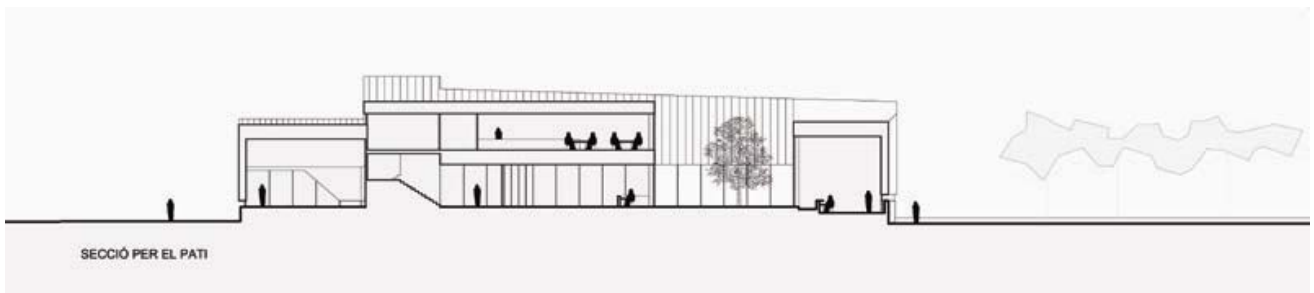


First floor

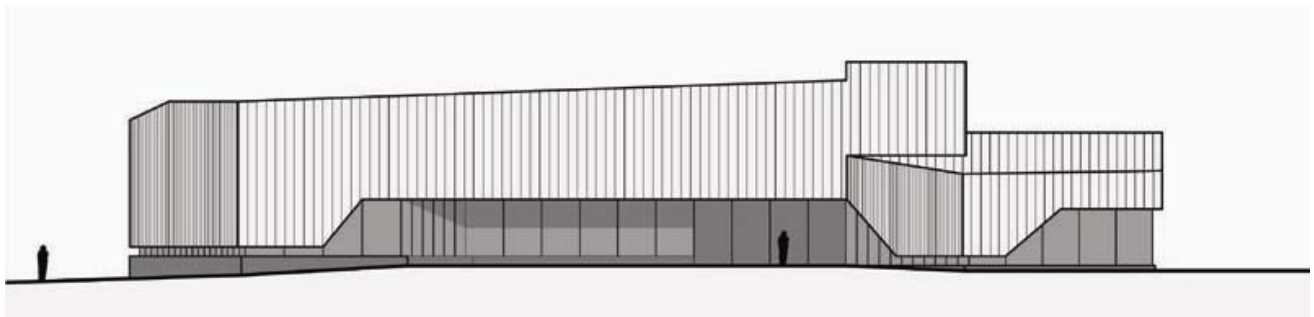
CO003
LIBRARY AND MUNICIPAL ARCHIVE IN LLANÇÀ



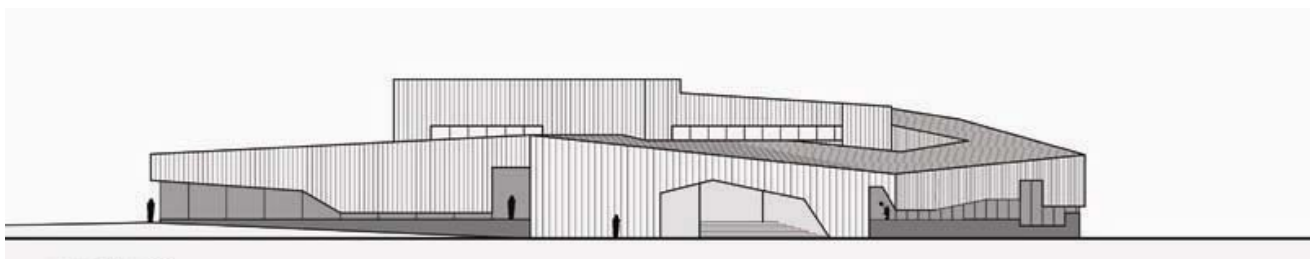
Section



Section through the courtyard



South elevation



North east elevation

CO003

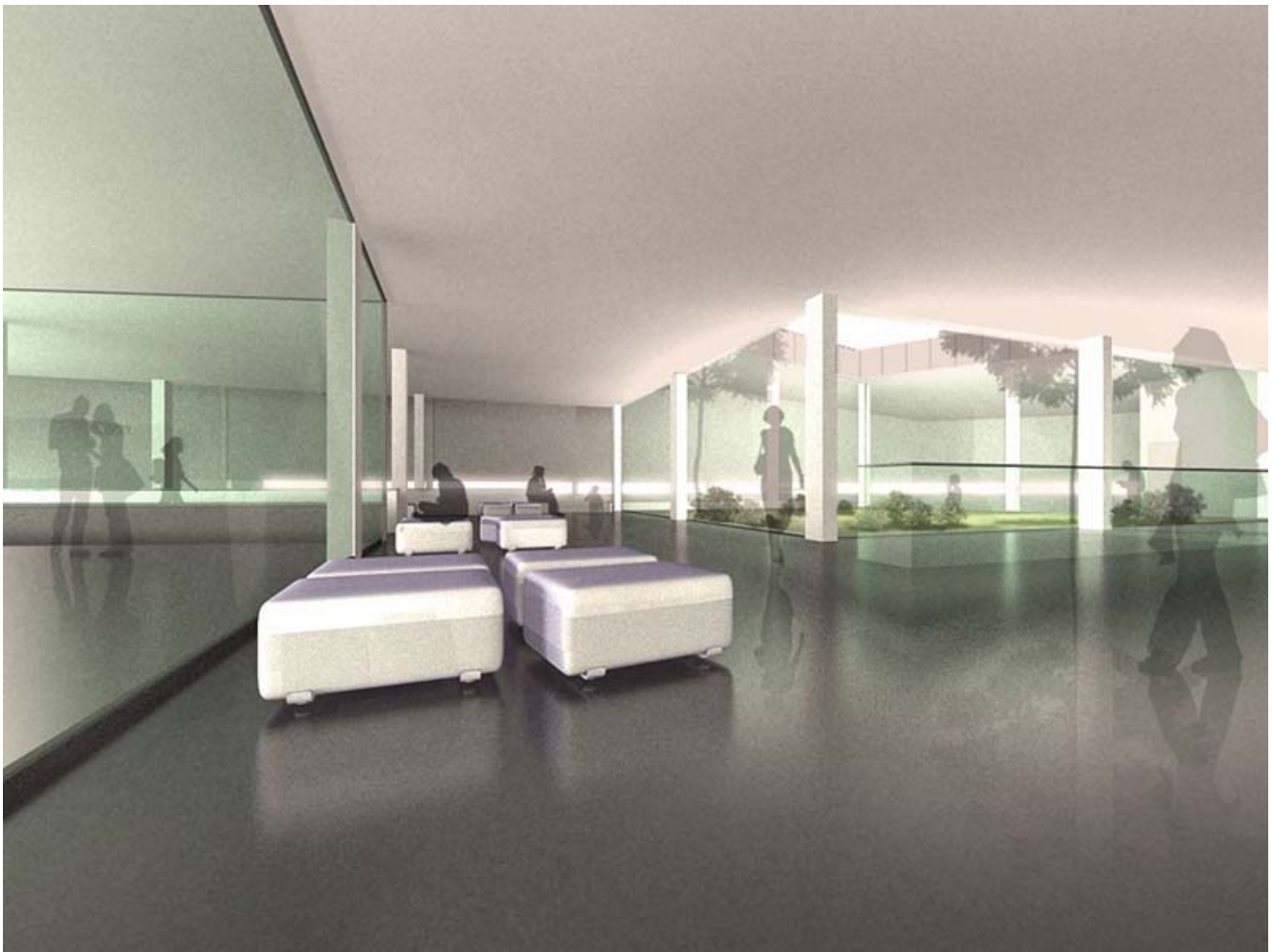
LIBRARY AND MUNICIPAL ARCHIVE IN LLANÇÀ

3. PICTURES



Virtual view

CO003
LIBRARY AND MUNICIPAL ARCHIVE IN LLANÇÀ



Virtual view. Interior

CO003

LIBRARY AND MUNICIPAL ARCHIVE IN LLANÇÀ

4. PROJECT DESCRIPTION

THE IDEA

The project for the new Library and Archive in Llançà has the will of becoming a new center and meeting point for the town. Laying the building in a closed shape to the north allows to create a large urban space protected from the main winds and a large porch facing south, which gives shelter and shadow and at the same time becomes a meeting point and the main hall of the building. The hall of the building, which crosses it from north to south, becomes a thin limit between inside and outside spaces so the entrance to the building is done in a natural way, making the access to knowledge and culture easier for the citizens. This constant visual relationship between the inside and outside is enforced by laying the library spaces around a courtyard. This courtyard gives natural light and ventilation to the building and improves the quality of the spaces. The volume of the archives is placed above the entrance level and gives a symbolic character to the building, because all the users are going to walk beneath it at the moment of getting into the hall. The exhibition room and the multipurpose room are provided of sliding walls so they can modify their sizes depending of the requirements of the events. Both of them are linked to the hall, so they could be opened to it if necessary. The new building for the Library and Archive of Llançà sets up as a symbol of the knowledge, at the town entrance, shaping the street with the Europa avenue, creating a big square and becoming a new cultural reference for the entire town.

SUSTAINABLE ISSUES

We understand that sustainable design means all the strategies directed to minimize or eliminate the environmental impact of the

building, and that this impact is produced during the construction process, the useful life of the building and the demolition process. All these strategies are part of the process of design, and have been taken into account because of that at all the levels: from the study of the climate of Llançà, the urban layout of the building to the selection of the finishing materials.

THE PLACE

At urban level the building is placed in a position that promotes the urban system and the relationships between village and the green area planned for the future. The building is designed along with the public space in order to create a new multipurpose square, protected from the wind and sheltered by the building, a new space "to make town".

THE BUILDING

The volume is compact with an interior courtyard so it is protected from the "tramuntana" (north wind), the noise from nearby roads and to favor south sunlight and passive natural heating. An inside topography is created using different ground floor levels to improve space proportions and itineraries.

The composition of the spaces is designed in order to get a continuous visual relationship between public and private areas.

The construction process is designed mainly with prefabricated materials and modular systems. We propose a reduced gamma of materials to simplify the construction, which would be a coating of zinc for façades and roofs, and concrete for walls.