

P0008

INTERIOR REFORM OF AN APARTMENT IN BANYOLES

INTERIOR REFORM OF AN APARTMENT IN BANYOLES

Apartment partial reform in Banyoles. The project avoids the traditional concept of a house in closed spaces, and proposes a reform based on enhancing the spaces, widening the rooms, allowing a visual and spatial continuity between all the rooms.



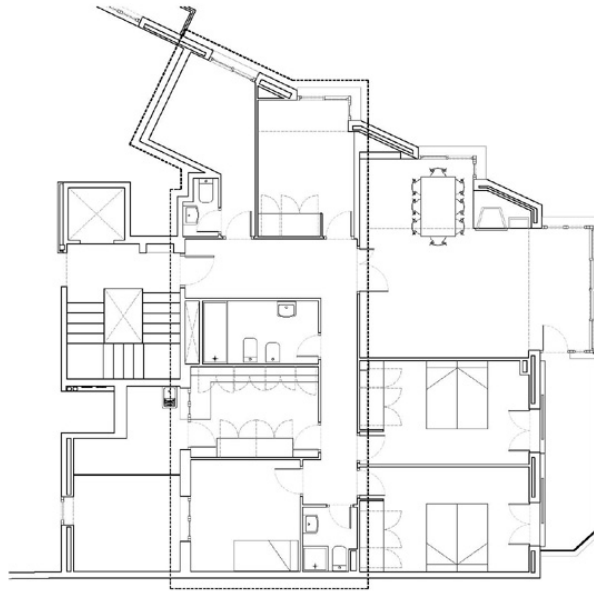
1. FACTS

TYPE	RESIDENTIAL
SUBTYPE	MULTIPLE-DWELLING
USE	PRIVATE
CLIENT	RUBEN MANONELLAS I SOLÉ
CONTRACTOR	-
SURFACE	136.69m ²
LOCATION	BANYOLES
START	2006
COMPLETION	2007

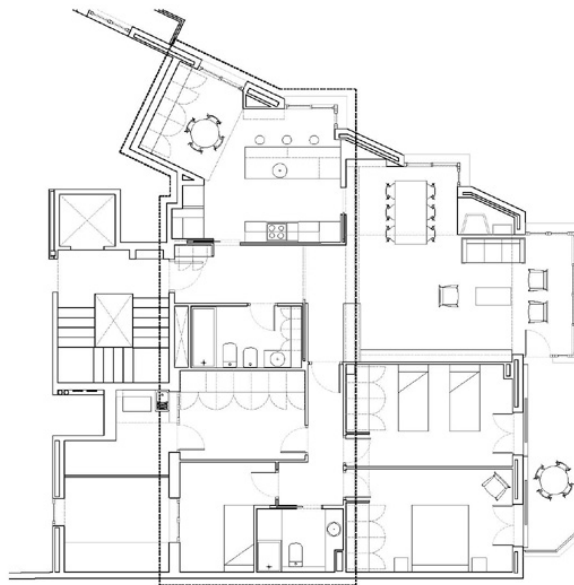
P0008

INTERIOR REFORM OF AN APARTMENT IN BANYOLES

2. DRAWINGS



Previous plan



Modified plan

P0008

INTERIOR REFORM OF AN APARTMENT IN BANYOLES

3. PICTURES



Interior view

P0008

INTERIOR REFORM OF AN APARTMENT IN BANYOLES



Interior view

P0008

INTERIOR REFORM OF AN APARTMENT IN BANYOLES



Interior view

P0008

INTERIOR REFORM OF AN APARTMENT IN BANYOLES



Interior view

P0008

INTERIOR REFORM OF AN APARTMENT IN BANYOLES



Interior view

P0008

INTERIOR REFORM OF AN APARTMENT IN BANYOLES



Interior view

P0008

INTERIOR REFORM OF AN APARTMENT IN BANYOLES

4. MEMÒRIA

This project consists on the partial reform of an apartment in Banyoles. The apartment is located on a third floor of a multiple-dwelling building. The considerable age of the building conditions the intervention regarding structure and services.

The transformation of the interior distribution avoids the traditional concept of closed spaces which doesn't fit the current needs of a family or the new ways of living.

The modern concept of the kitchen as an important piece of the house where more activities than cooking are done is the main line for the project. The previous kitchen was unable to satisfy the required needs of surface and light.

The new layout links the kitchen with the hall and the dining room, by placing it at the east side of the house in order to get sun light in the morning. However it's designed largely enough to support other uses. Inside the kitchen there are two uses. On one side a working area composed by two bars and the refrigerator and fridge. On the other side, there's an office linked to the working area.

The room previously used as a kitchen will be used as a room. This strategy will create two different zones in the house: the day zone and the night zone.