

P1002  
GRANARY RENOVATION IN VILAVENUT

# GRANARY RENOVATION IN VILAVENUT

Granary renovation of a "masia" (Catalan traditional house) in Veinat d'en Deri, Vilavenut. The project recovers and enhances the values of the stone walls to maintain the characteristics of the rural environment.

Project designed with Josep Pla i de Solà-Morales, architect.

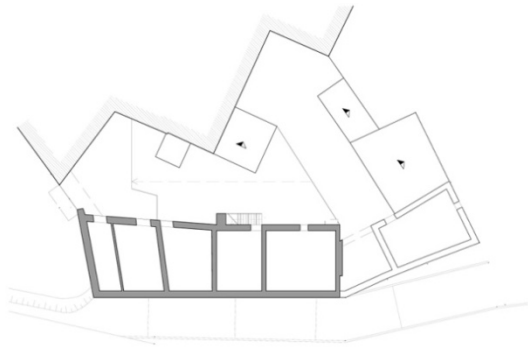


## 1. FACTS

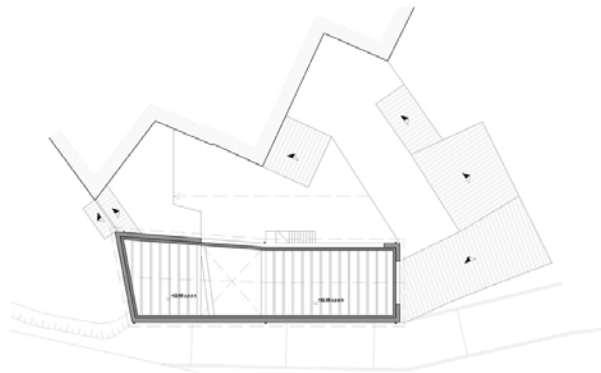
TYPE	SERVICES
SUBTYPE	STORE
USE	PRIVATE
CLIENT	PILAR DE PUIG
CONTRACTOR	PEDRO MANJÓN, S.L.
SURFACE	219,29m <sup>2</sup>
LOCATION	VILAVENUT
START	2007
COMPLETION	2008

P1002  
GRANARY RENOVATION IN VILAVENUT

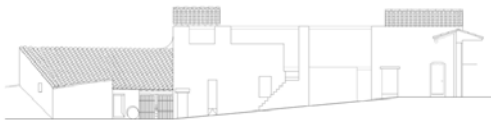
2. DRAWINGS



Plan. Previous state



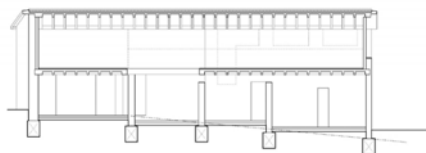
Plan. Modified state



Elevation. Previous state



Elevation. Modified state



Section. Modified state

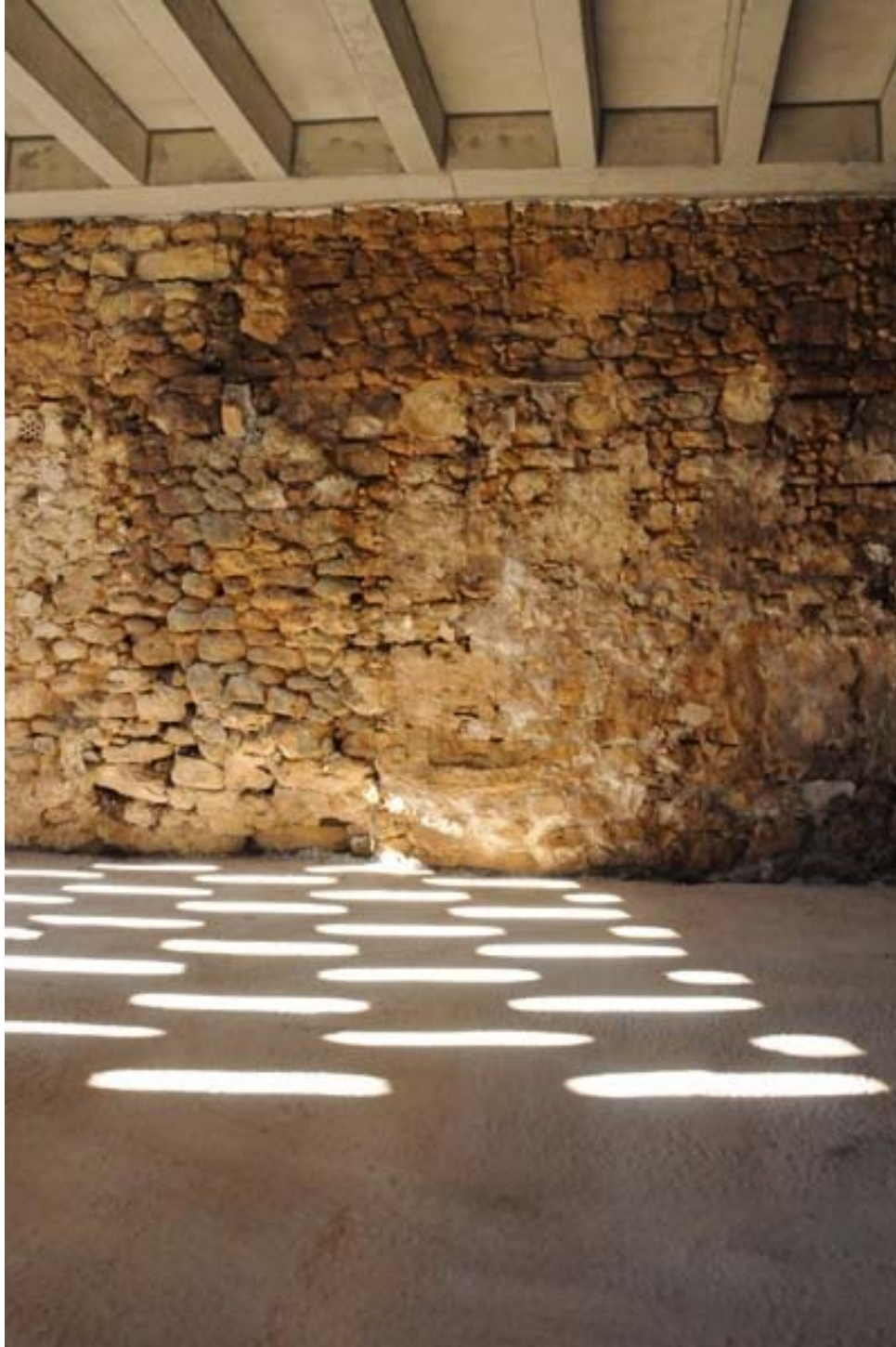
P1002  
GRANARY RENOVATION IN VILAVENUT

3. PICTURES



View of the entrance porch

P1002  
GRANARY RENOVATION IN VILAVENUT



Interior view

P1002  
GRANARY RENOVATION IN VILAVENUT



Exterior view

P1002

GRANARY RENOVATION IN VILAVENUT

#### 4. PROJECT DESCRIPTION

The project consists on the renovation of a granary next to a “masia” at Veinat d'en Deri in Vilavenut (District of Pla de l'Estany). The building is part of a set of support constructions next to the “masia”, which are grouped in an irregular way around a courtyard and that form a traditional and rural housing group.

The intervention focuses on rebuilding the structure and maintaining the existing ground and first floors. The access to the ground floor is done through the interior common area, where the height is more favorable. The project respects the existing volume, but increasing the interior height of the ground floor, in order to fit the present regulations, but without changing the exterior height of the building. The ground floor and the semi-basement floor have 3 levels at different heights (0.67m, -00,27m, +00,03m) in order to fit the existing ground slope.

The façade is renovated following the traditional constructive system and the esthetic criteria of the buildings of the area. The old granaries have horizontal openings at the upper part so they could keep the hay ventilated. Following this idea, the inside face of the stone walls is reinforced with a load bearing brick wall that sustains the roof and protects the interior from the climate and intrusions.

These walls have enough structural flexibility so, if necessary in the future, more horizontal openings could be done. A continuous eave at the edge of the roof unifies the overall esthetic and strengthens the perimeter of the roof slab. The previous roof was in a very much deteriorated condition, with timber structure composed by trusses and joists, covered with ceramic Arabic tiles. The new roof is made of reinforced concrete with “board” beams following the previous system, but with the necessary layers for insulation and waterproofing requirements. The top layer is made of re-used ceramic tiles, whenever is possible. The new eave at the perimeter is made of reinforced concrete. The texture is made using a wooden shuttering for the concrete, so the final appearance shows the timber traces. By doing this texture and the stone feature of the concrete, which reflects the pass of time in its surface, the project gets the integration with the character of the environment.